



# Fiber Cement Board



# SHIPRADE

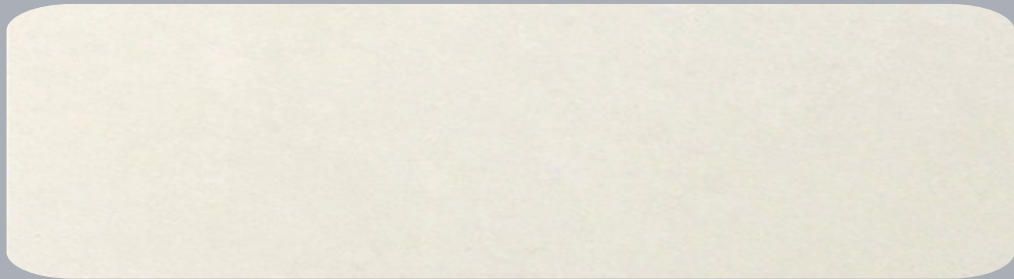
**SHIPRADE DIŞ TİCARET LTD. ŞTİ.**  
Sütlüce, Gökdere Sk. No:58/9  
Tepebaşı / Eskişehir / TR  
T: +90 542 733 00 41  
info@shiprade.com - export@shiprade.com  
www.shiprade.com

EPD®  
THE INTERNATIONAL EPD® SYSTEM

ISO 9001  
14001 - 45001 - 50001  
14064



# High Performance Fiber Cement Boards With Smooth and Decorative Textures



Can be painted  
in different  
colours.

## GENERAL INFORMATION

**Fiber Cement Boards** is a multipurpose building board that can be used in interior and exterior areas, consisting of a mixture of cement and fiber, with A1 Fire Class.

## APPEARANCE

Its natural color is cream tones thanks to the raw materials used in its production. It has a smooth surface. Different textured varieties and calibrated flat and fine line sanded surface appearances are available.



Fiber Cement Flat

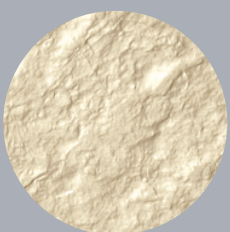


Fiber Cement Line

## Fiber Cement Product Range for Exterior and Interior Areas



Wood



Stone



Brick



BrickStone

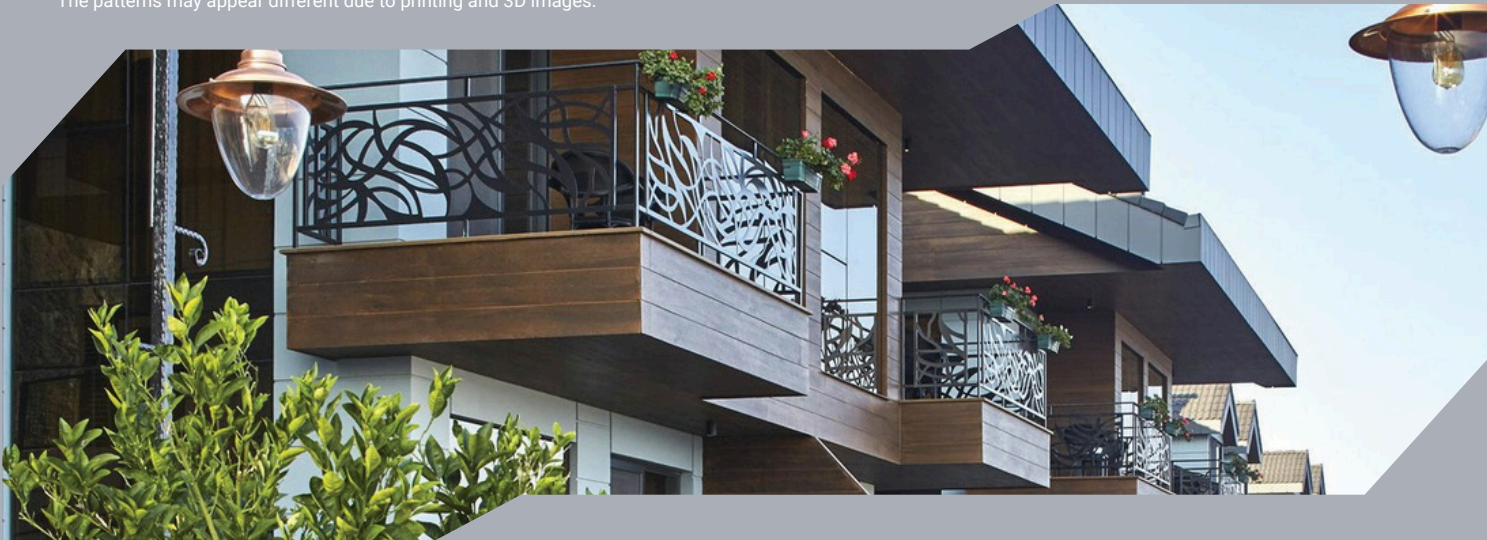


Outline®



Plaster

The patterns may appear different due to printing and 3D images.



## Standard Dimensions (mm)

Products	Thickness	Width	Length
Fiber Cement	6 - 8 - 10 - 12 - 14	1250	2500 - 2800 - 3000
Fiber Cement Wood Fiber Cement Stone Fiber Cement Brick Fiber Cement BrickStone Fiber Cement Plaster	8 - 10 - 12 - 14	1250	3000
Fiber Cement Outline	10 - 12	1250	3000

Customized dimensions are possible by cutting the standard production size boards in desired width and length. A thickness of min. 10 mm is recommended for facade. It is not recommended to use the whole board of standard dimensions for facade excluding prefabricated buildings.

## Technical Specifications

Apparent Density (Dry) Bending	1150 ± 75 kg/m3 ≥
Strength Modulus of Elasticity	7 N/mm2
Durability Class Reaction to Fire	≥ 4500 N/mm2
Class	Category A, Class 2 A1 (EN 13501-1)

Apparent Density (Shipment): 1400 ± 100 kg/m3

## Areas of Use

### Interior

- Wall Cladding&Partition Wall
- Shaft Walls
- Fire Wall
- Pefabricated Building Walls\*
- Indoor Ceiling
- Wet Surfaces (Under Ceramic)\*\*

### Exterior

- External Wall
- Roof (Under Roofing)
- Outdoor Ceiling
- Soffit and Fascia
- Balcony and Parapet
- Fences, Boundary Walls

\* Used on interior and exterior walls.

\*\*Only in applications performed on boards fixed to metal construction by mechanical assembly.



## Advantages of Use



Impact  
Resistant



Fire  
Resistance



Water & Moisture  
Resistant



Insect-proof



Weather  
Resistant



Thermal  
Insulation



Sound  
Insulation



Easy  
Workablirty



Environmentally  
Friendly



Harmless to  
Health



Lightweight



Easy  
Installation