



SHIPRADE

Glass Railing Systems Catalog

www.shiprade.com



Glass Railing Systems

- › Durable aluminium construction
- › Aesthetic color options
- › Easy and quick installation
- › Impact- and weather-resistant
- › Different glass thicknesses available
- › Stainless and long-lasting
- › Secure glass fixing
- › Suitable for indoor and outdoor applications



SHIPRADE DIS TICARET

At Shiprade, we deliver premium aluminium and glass railing solutions that combine modern design with certified safety. Ideal for balconies, staircases, and terraces, our systems offer high durability, easy installation, and compliance with CE standards. With various mounting options and glass thicknesses from 5+5 mm to 12+12 mm, we provide tailored solutions for every architectural project.



Product List



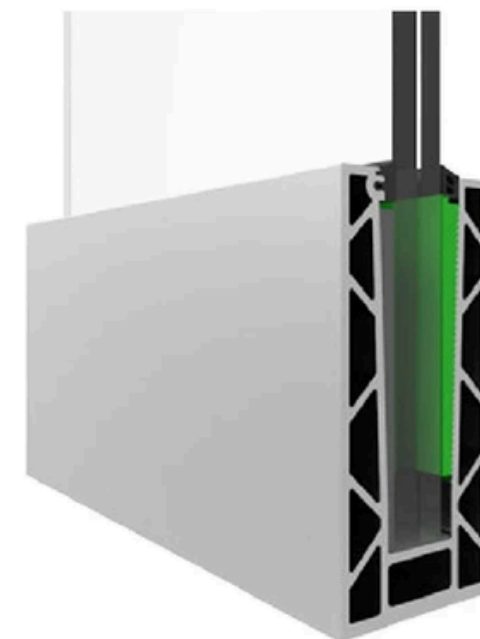
AS50



NS50



US50



US50Max

Product List



CS50



US50F



XS50



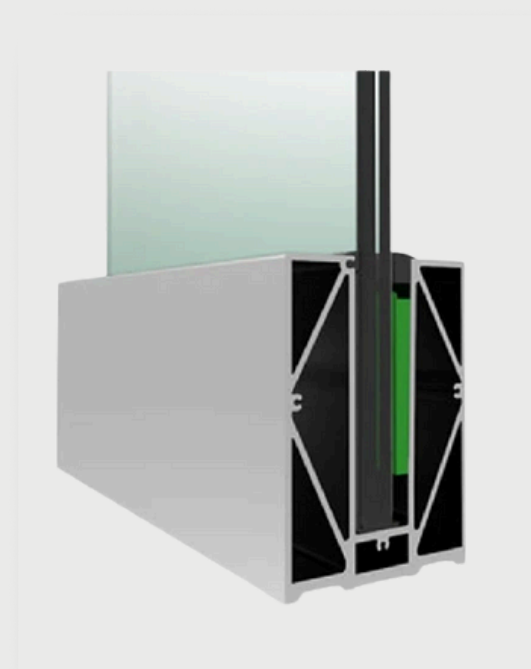
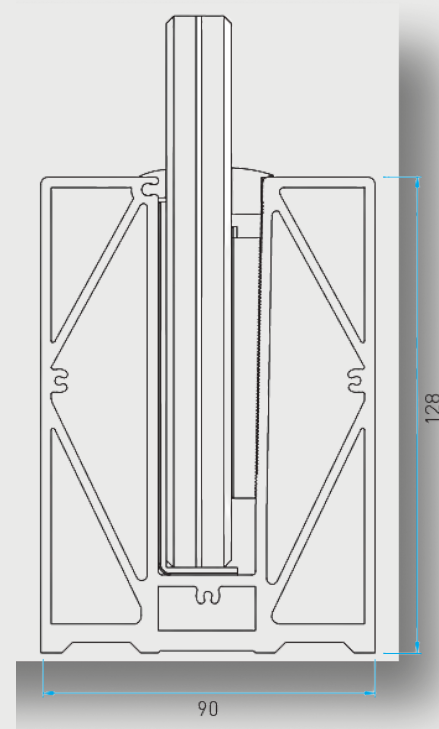
X50



AS50

AS50 is one of the newest glass railing base profiles within **Shiprade Systems**. Its solid structure and modern design provide both high safety and a premium visual appearance. With a total width of **90 mm** and a height of **128 mm**, **AS50** is designed for large base applications. The **107 mm** glass holding depth delivers enhanced strength and reliability under high load conditions.

AS50 is compatible with **12 mm, 17.52 mm, and 21.52 mm** glass thicknesses. The glass is secured using a simple and efficient plastic wedge fixing system, ensuring fast and reliable installation. The profile is available in standard **RAL colors** including **7016, 9005, 9016, and 7044**.

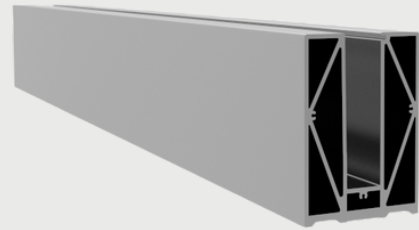


SHIPRADE DIS TICARET

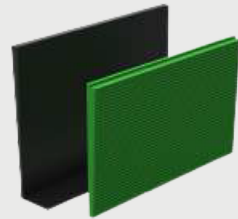


AS50

Full Length Base Channel Profile

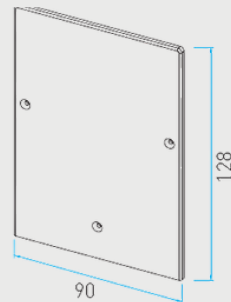


Code: **SP-1512**
 Length: **500cm**
 Weight: **7,53 Kg/m**
 Finish: **Powder Coating**
 Pre Drilled Holes: **Upon Request**
 Glass Thickness: **12,76mm / 17,52mm / 21,52mm**



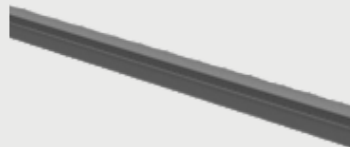
AS50-KM12 (6+6 mm Glass)
 AS50-KM16 (8+8 mm Glass)
 AS50-KM20 (10+10 mm Glass)

Endcap



AS50 - 1512K

Gasket

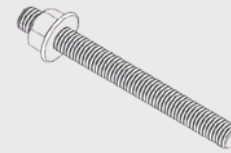


12 mm - Interior Gasket
 13,76 mm - Exterior Gasket
 16 mm - Interior Gasket
 17,52 mm - Exterior Gasket
 20 mm - Interior Gasket
 21,52 mm - Exterior Gasket

Fixing Components



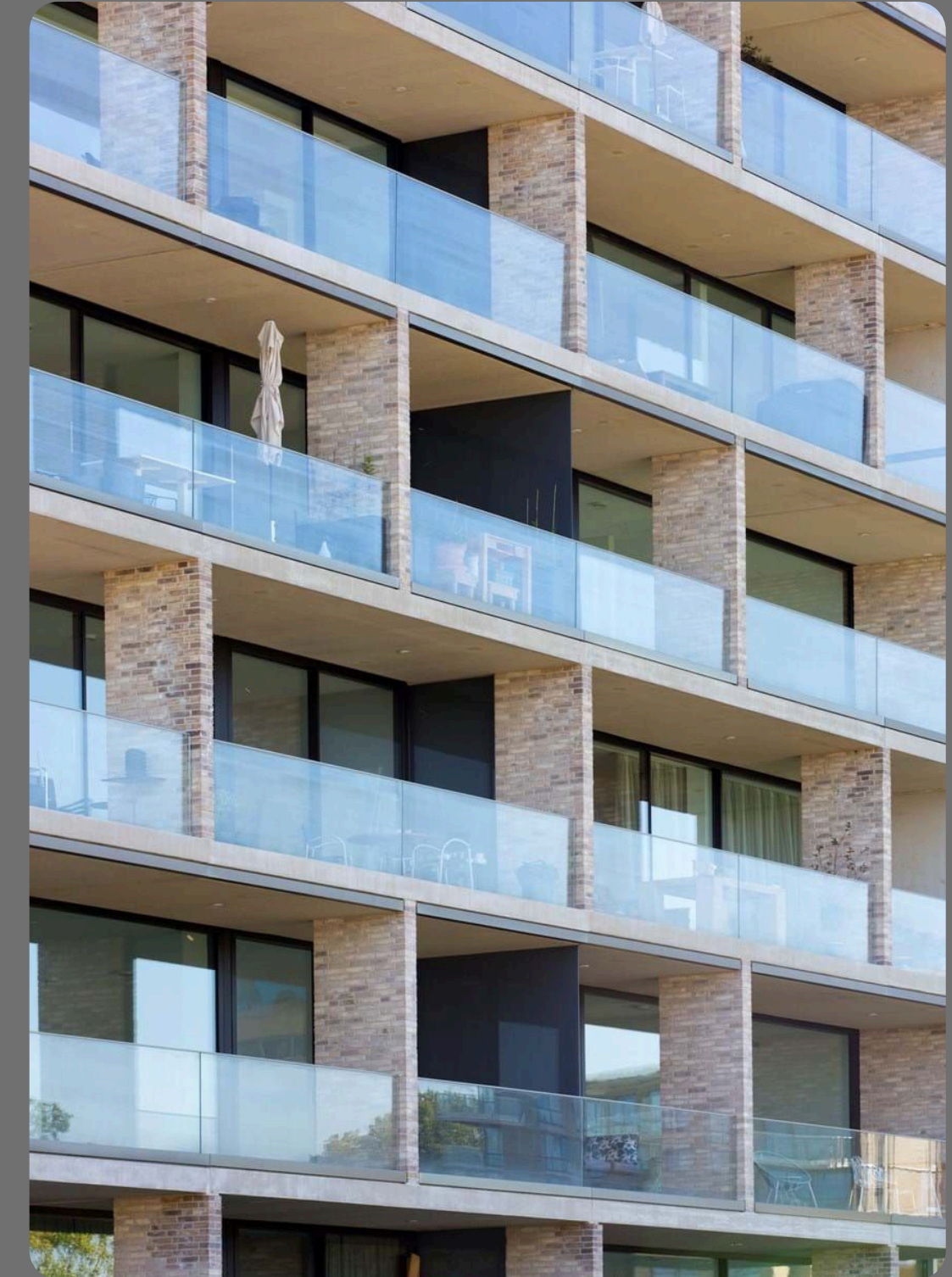
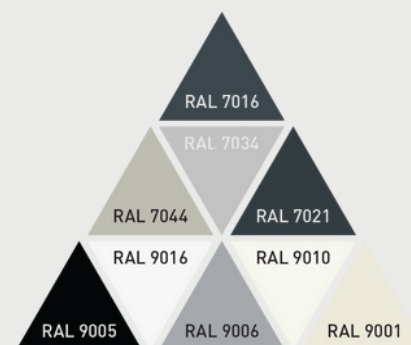
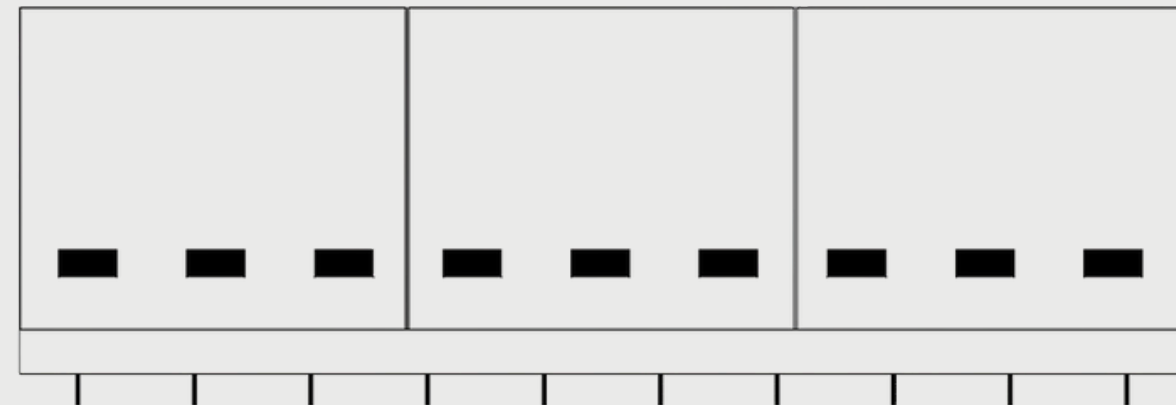
SAK-5027K
Chemical Anchor



GJ10X150
M10 x 150 Threaded Rod
+ Washer + Nut



SAK-5299
Wedge Fixing Tool



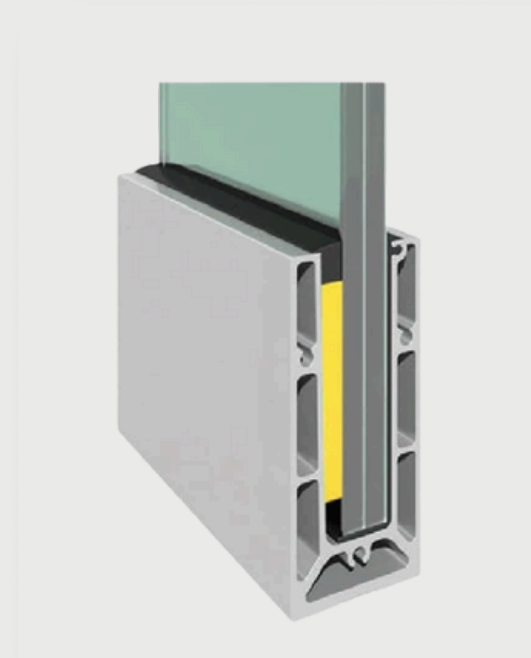
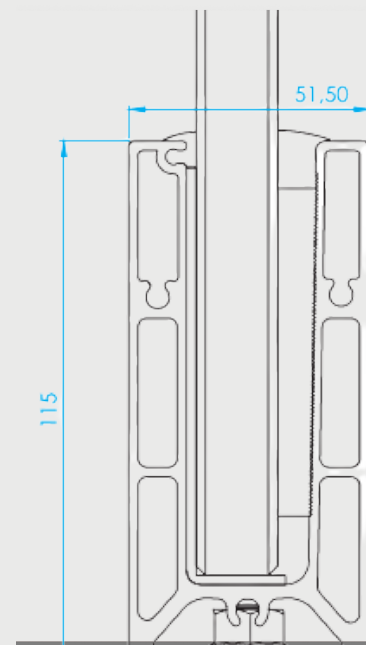


SHIPRADE DIS TICARET

NS50

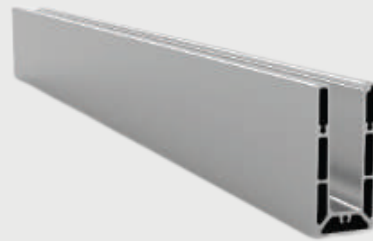
The **NS50** model anodized aluminum base shoe channel profile is an ideal solution for both interior and exterior frameless glass railing systems that require floor mounting. Its linear design provides a sleek, modern appearance while maintaining a clear and unobstructed view for balconies and railing applications.

Designed to be weather-resistant, the **NS50** base shoe accommodates multiple glass thickness options. The system is compatible with **5+5 mm, 6+6 mm, 8+8 mm, and 10+10 mm** laminated glass panels. Installation is straightforward: the profile is securely fixed to the floor using anchor bolts, after which the glass panel is inserted directly into the channel for a fast and reliable setup.

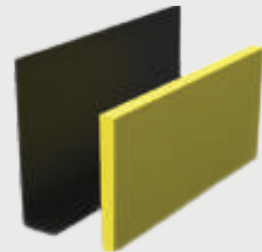


NS50

Full Length Base Channel Profile

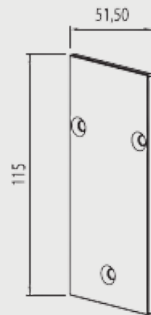


Code: **SP-1024**
 Length: **500cm**
 Weight: **7,53 Kg/m**
 Finish: **Natural Anodize / Powder Coating**
 Prefabricated: **Upon Request**
 Glass Thickness: **10,76mm / 12,76mm / 16,76mm / 17,52mm / 21,52mm**



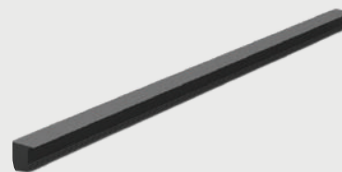
NS50-KM10 (5+5 mm Glass)
 NS50-KM12 (6+6 mm Glass)
 NS50-KM16 (8+8 mm Glass)
 NS50-KM20 (10+10 mm Glass)

Endcap



NS50 - 1024K

Gasket

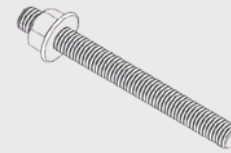


10 mm - Interior Gasket
 10 mm - Exterior Gasket
 12 mm - Interior Gasket
 13,76 mm - Exterior Gasket
 16 mm - Interior Gasket
 17,52 mm - Exterior Gasket
 16 mm - Interior Gasket
 17,52 mm - Exterior Gasket

Fixing Components



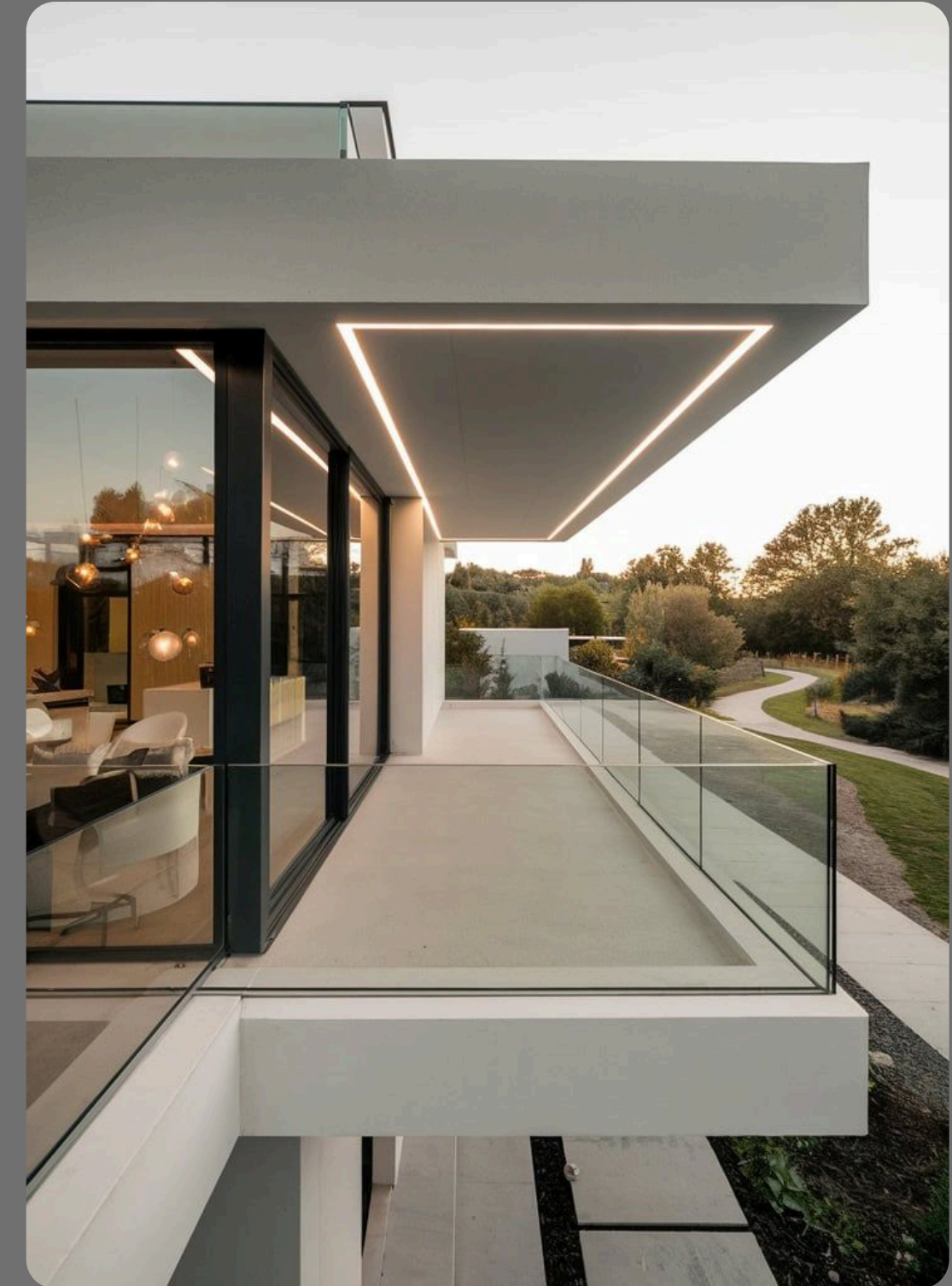
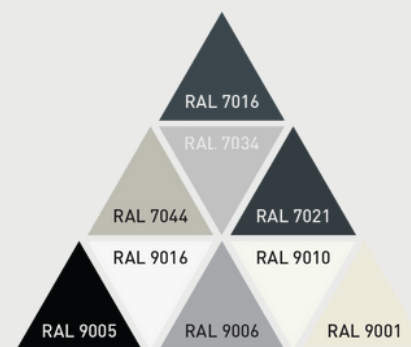
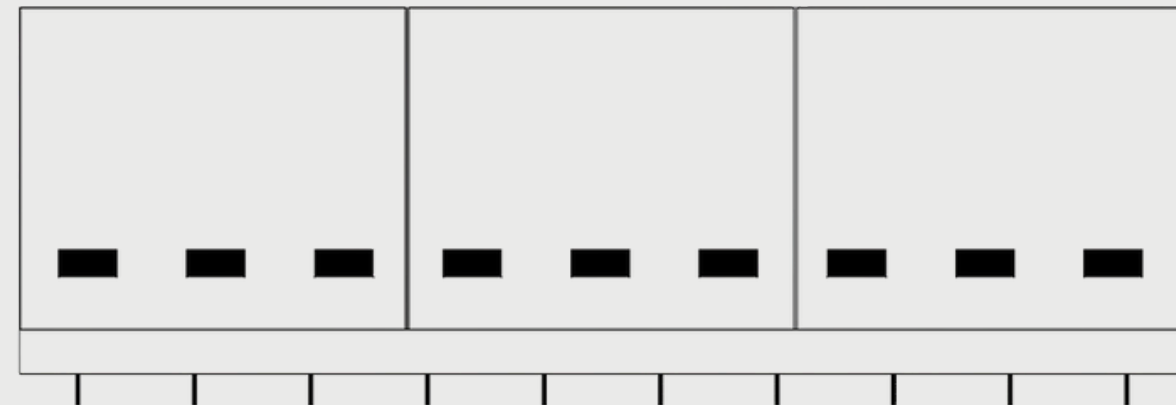
SAK-5027K
Chemical Anchor



GJ10X150
M10 x 150 Threaded Rod
+ Washer + Nut



SAK-5299
Wedge Fixing Tool



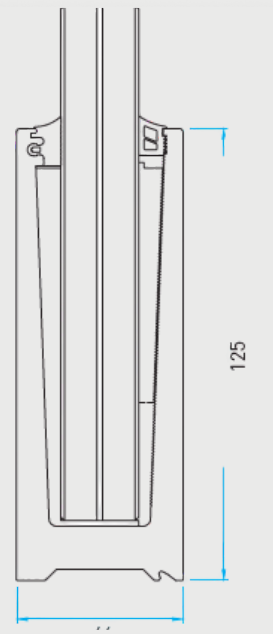


US50

US50 is a slim-designed glass railing base channel profile developed for modern architectural applications. Its compact structure occupies minimal space in the installation area while maintaining strong glass support.

The profile is compatible with glass thicknesses ranging from **12 mm to 21.5 mm**. **US50** is extruded in **6-meter lengths**, and hole fabrication can be provided upon request to meet specific project requirements.

The most preferred color options for the **US50 series** are **RAL 9005** and **RAL 7016**, offering a clean and contemporary appearance suitable for various design concepts.



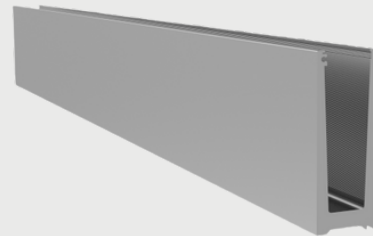
SHIPRADE DIS TICARET



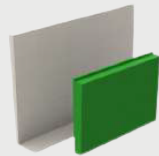
US50

SHIPRADE DIS TICARET

Full Length Base Channel Profile

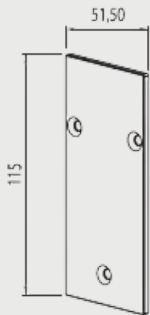


Code: **SP-1358**
 Length: **600cm**
 Weight: **5,83 Kg/m**
 Finish: **Natural Anodize / Powder Coating**
 Prefabricated: **Upon Request**
 Glass Thickness: **12 mm / 12,76 mm / 17,52 mm / 21,52 mm**



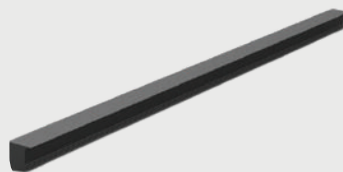
US50-KM12 (6+6 mm Glass)
 US50-KM16 (8+8 mm Glass)
 US50-KM20 (10+10 mm Glass)

Endcap



US50 - 1358K

Gasket

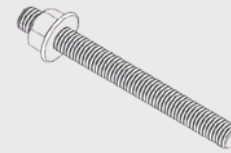


12 mm - Interior Gasket
 13,52 mm - Exterior Gasket
 16 mm - Interior Gasket
 17,52 mm - Exterior Gasket
 20 mm - Interior Gasket
 21,52 mm - Exterior Gasket

Fixing Components



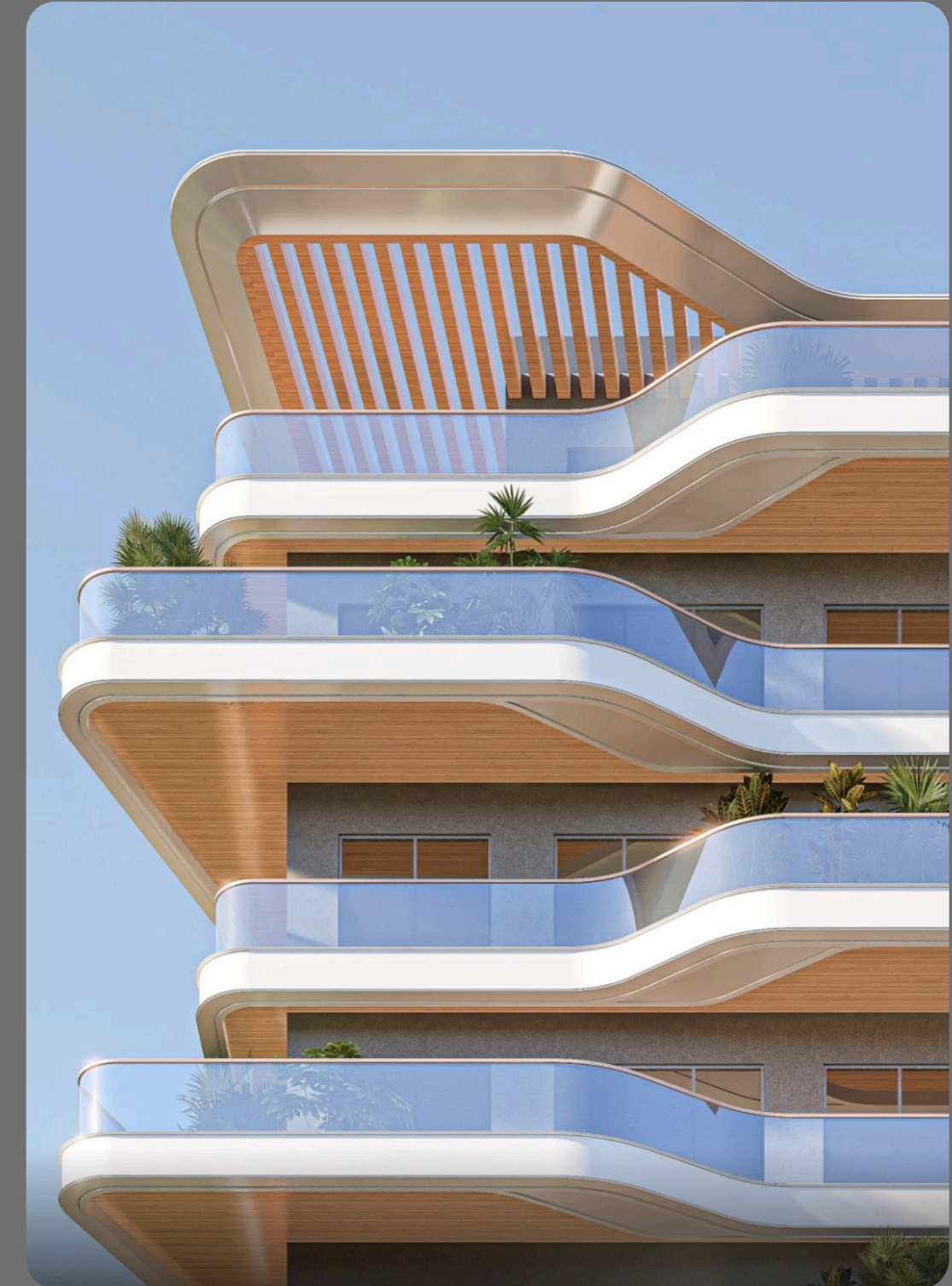
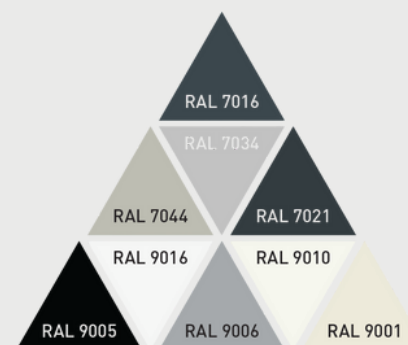
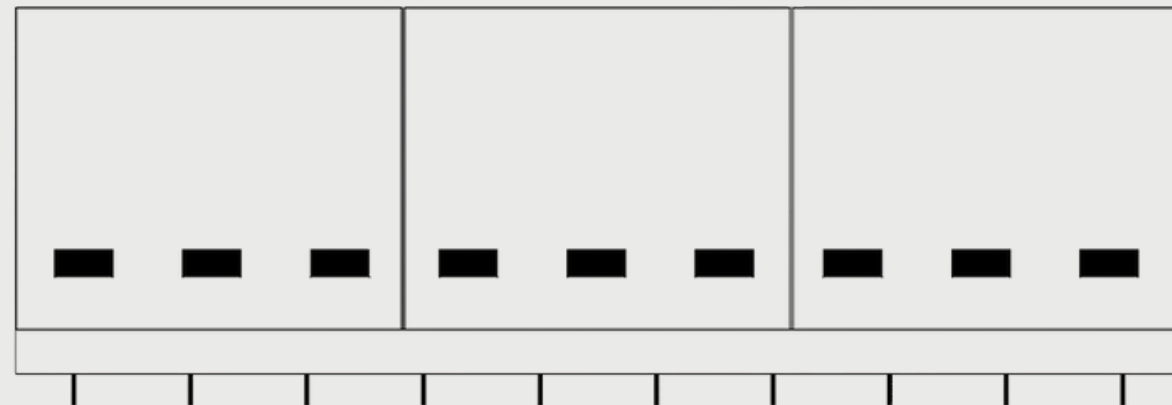
SAK-5027K
Chemical Anchor



GJ10X150
M10 x 150 Threaded Rod
+ Washer + Nut



SAK-5299
Wedge Fixing Tool



Get In Touch

For product information, technical support, or customized solutions, please get in contact with our team.

- +90 542 733 00 41
- imralkaan@shiprade.com
- www.shiprade.com
- Sütlüce Mh. Gökdere Sk.
No:58/9 Tepebaşı, Eskişehir -
Türkiye

